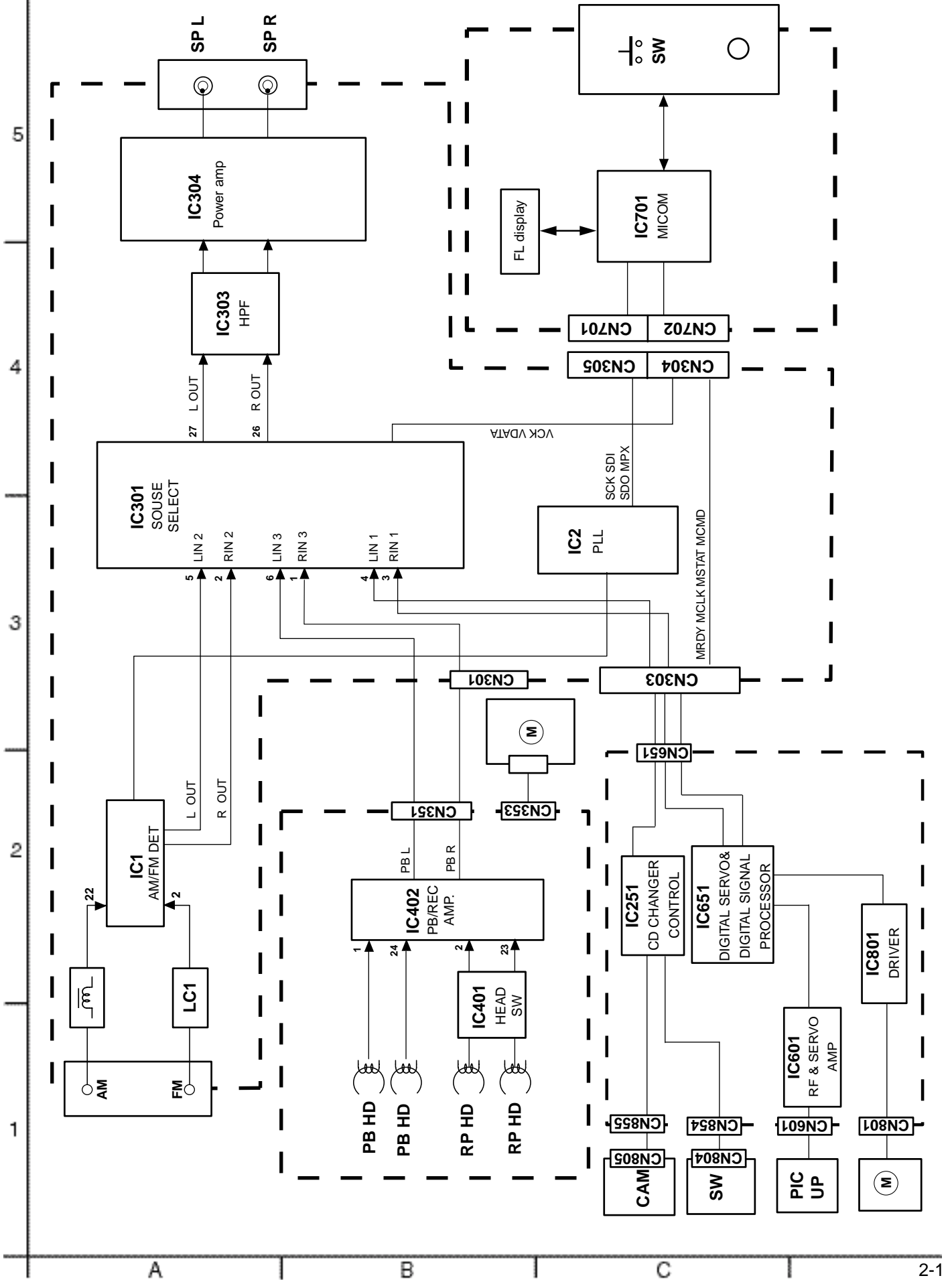
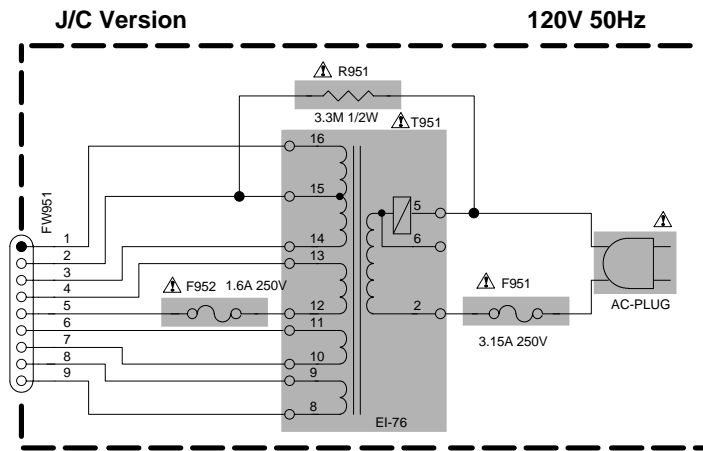


Block diagram



Standerd schematic diagrams

■ Power transformar section



Main amplifier section

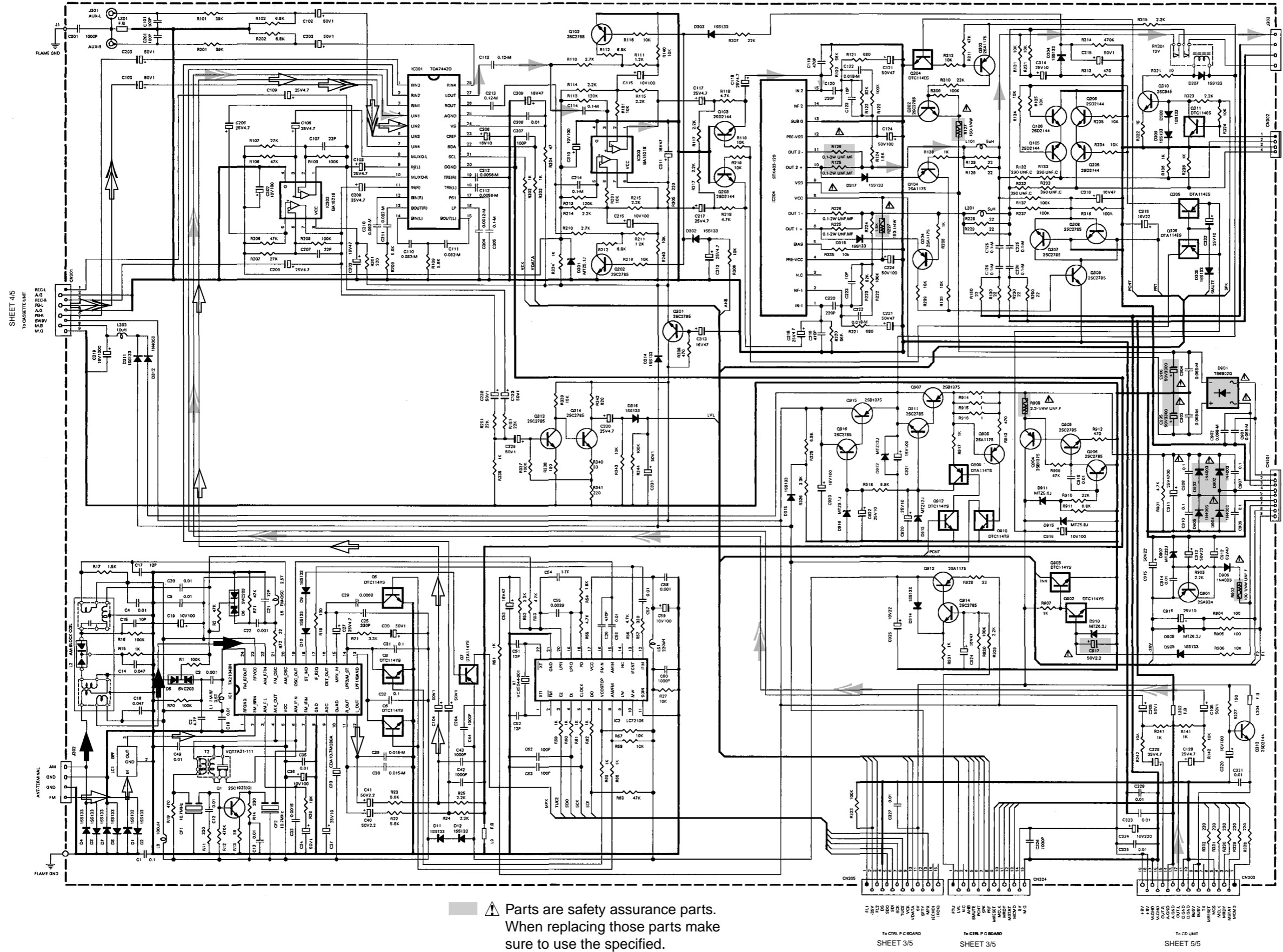
5

4

3

2

1



SHEET 4/5

- MAIN signal
- TAPE P.B. signal
- AM signal
- FM / TUNER signal
- CD signal

⚠ Parts are safety assurance parts.
When replacing those parts make
sure to use the specified.

SHEET 3/5

SHEET 3/5

SHEET 5/5

SHEET 2/5

Control section

5

4

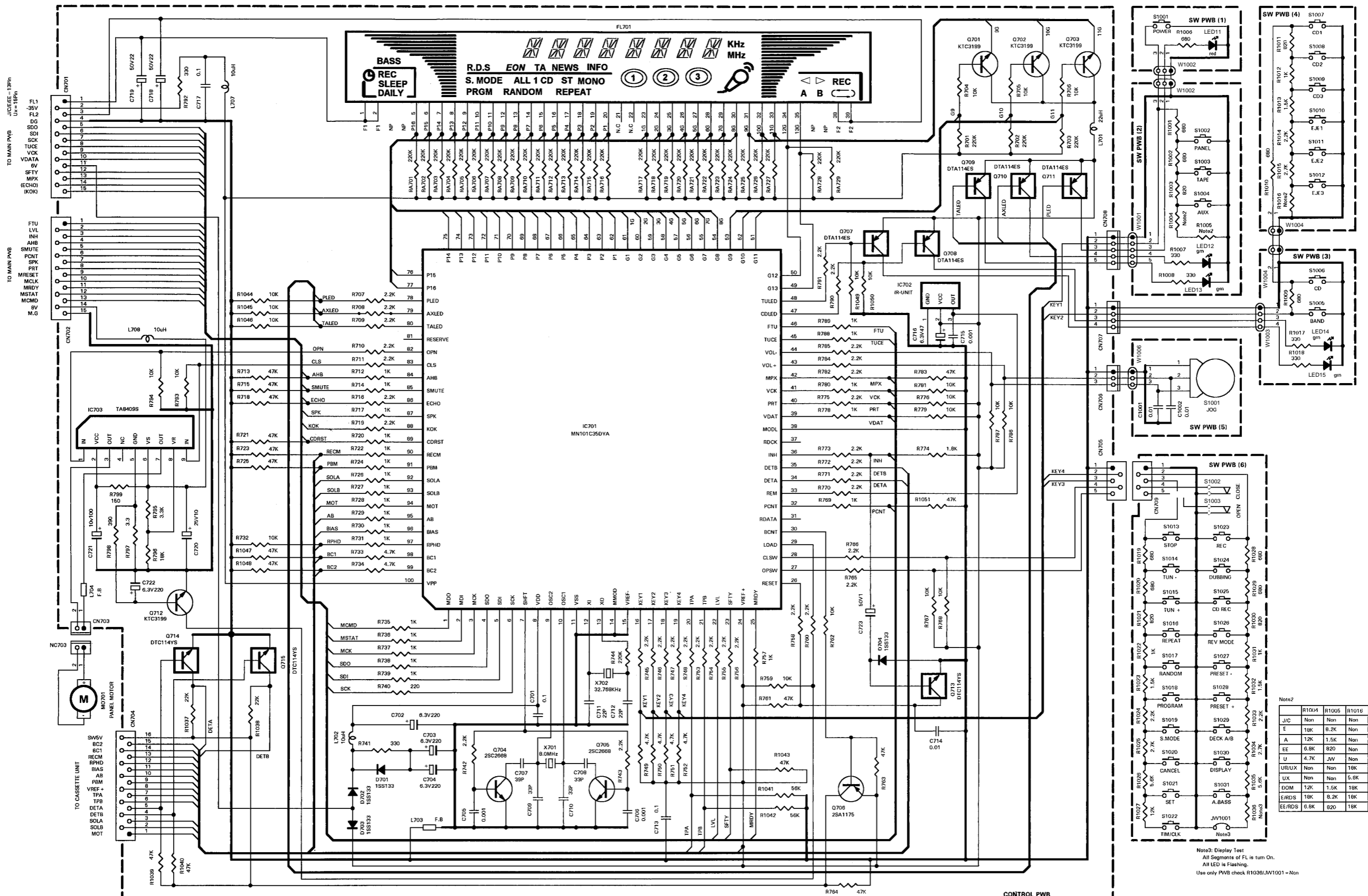
3

2

1

SHEET 2/5

SHEET 2/5

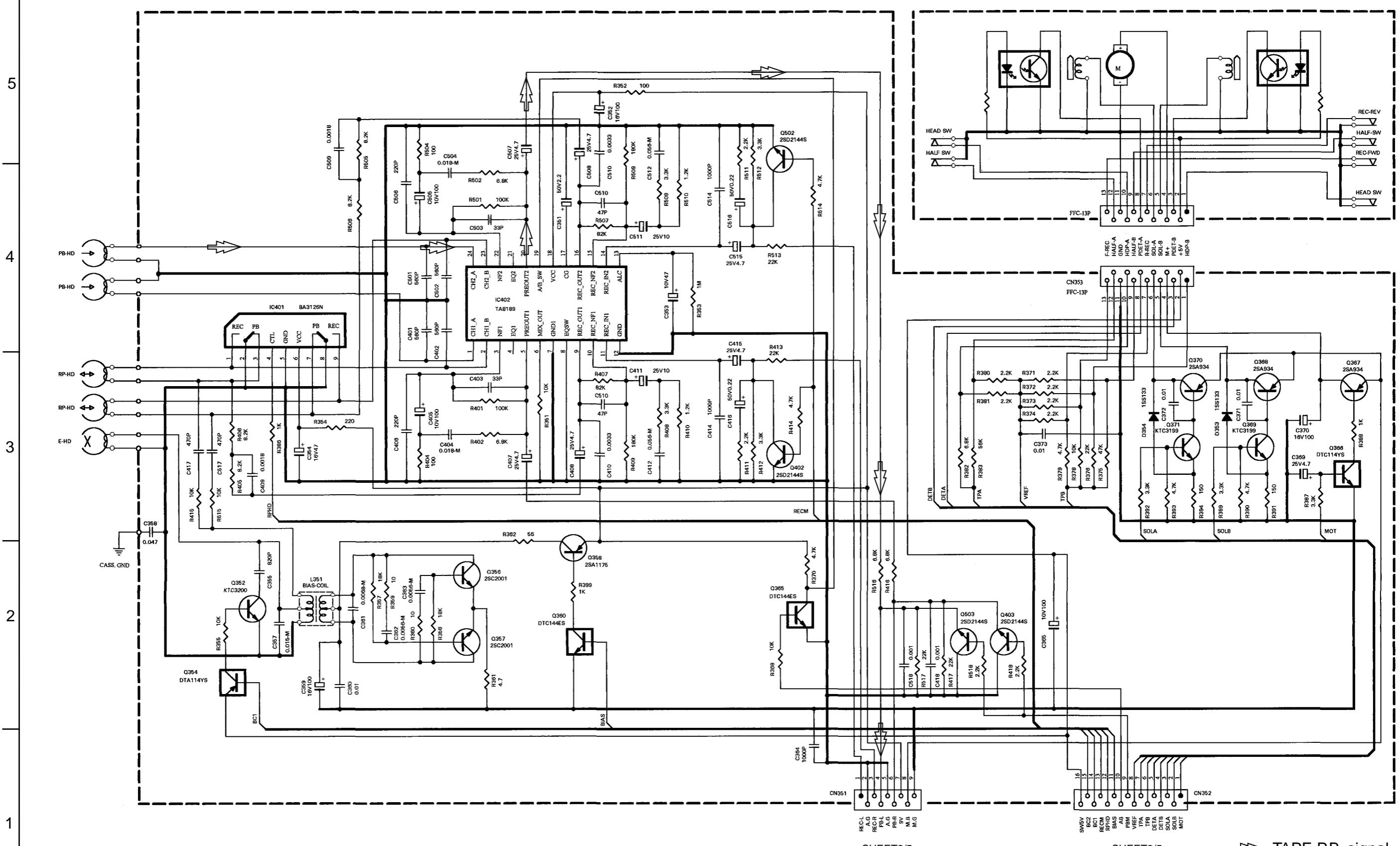


Note2

J/C	R1004	R1006	R1010
E	18K	8.2K	Non
A	12K	1.5K	Non
EE	0.8K	820	Non
U	4.7K	JW	Non
UR/LUX	Non	Non	18K
LUX	Non	Non	5.8K
DOM	12K	1.5K	18K
EE/RDS	18K	8.2K	18K
EE/RDS	0.8K	820	18K

Note3: Display Test:
 All Segments of FL is turn On.
 All LED is Flashing.
 Use only PWB check R1036LW1001-Non

■ Cassette amplifier section



5
4
3
2
1

A B C D E F G 2-5

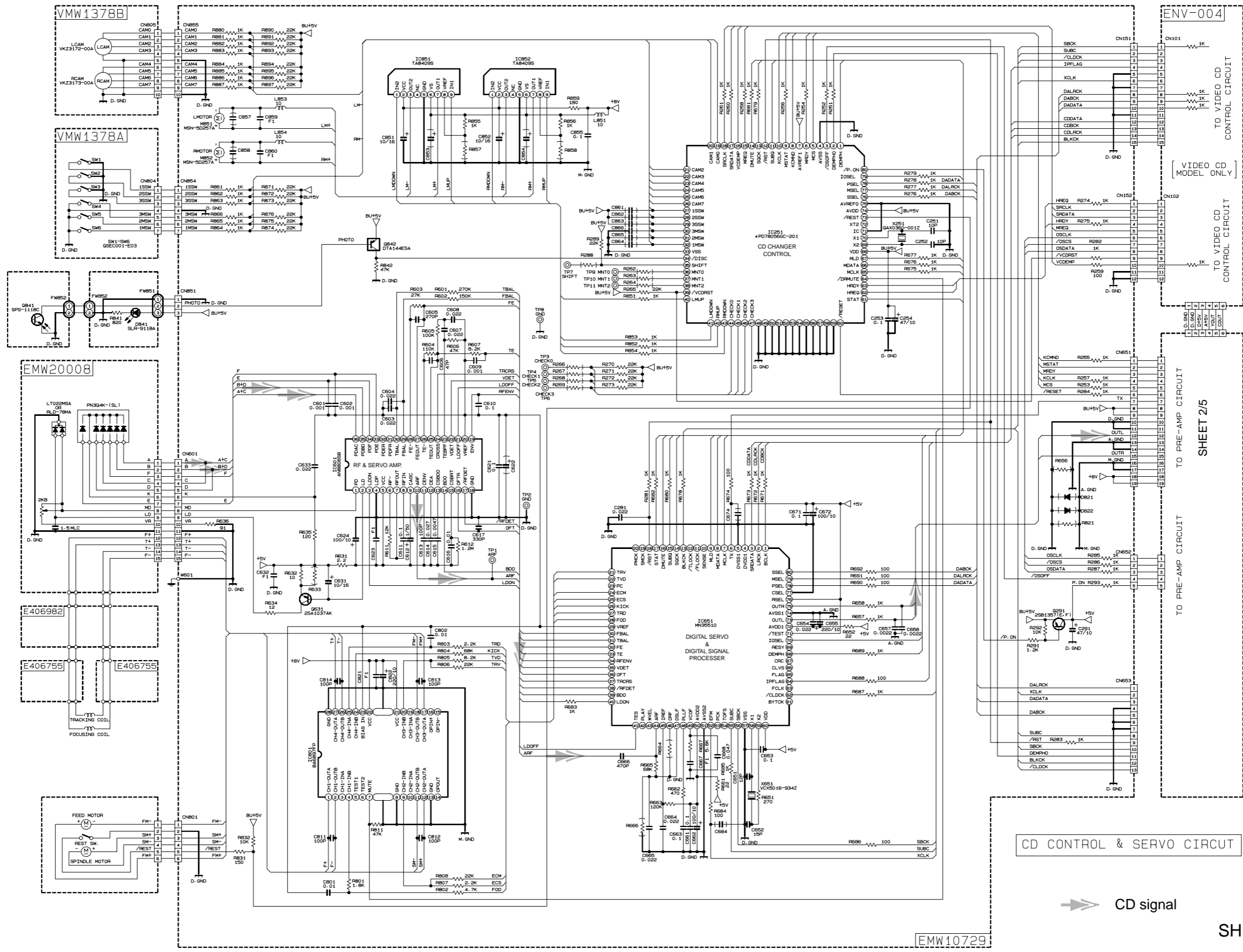
SHEET 2/5

SHEET 3/5

→ TAPE P.B. signal
SHEET 4/5

CD Servo & CD Mechanism control selection

5
4
3
2
1



CD CONTROL & SERVO CIRCUIT

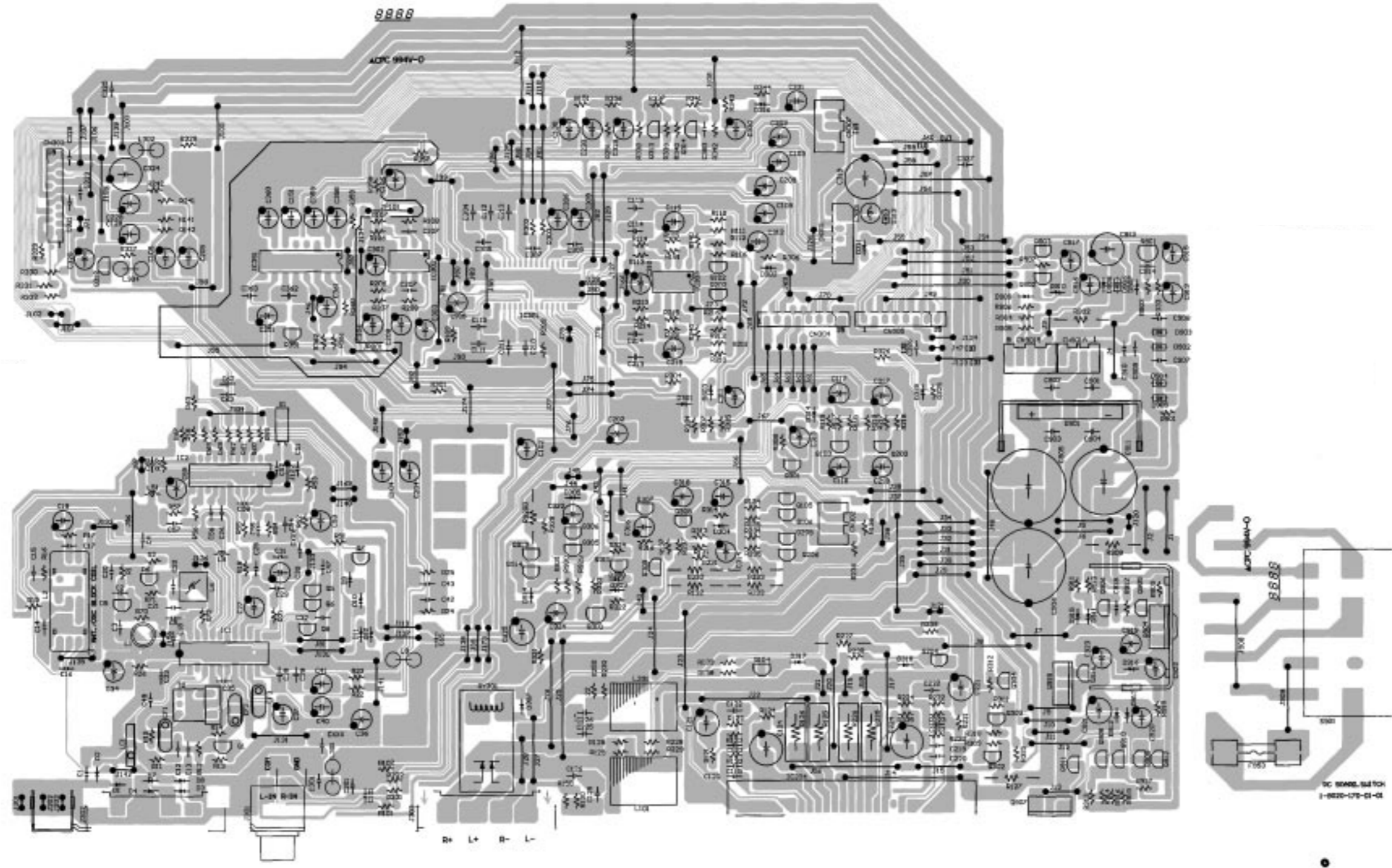
➡ CD signal

A B C 2-6 D E F G H

Printed circuit boards

■ Main board

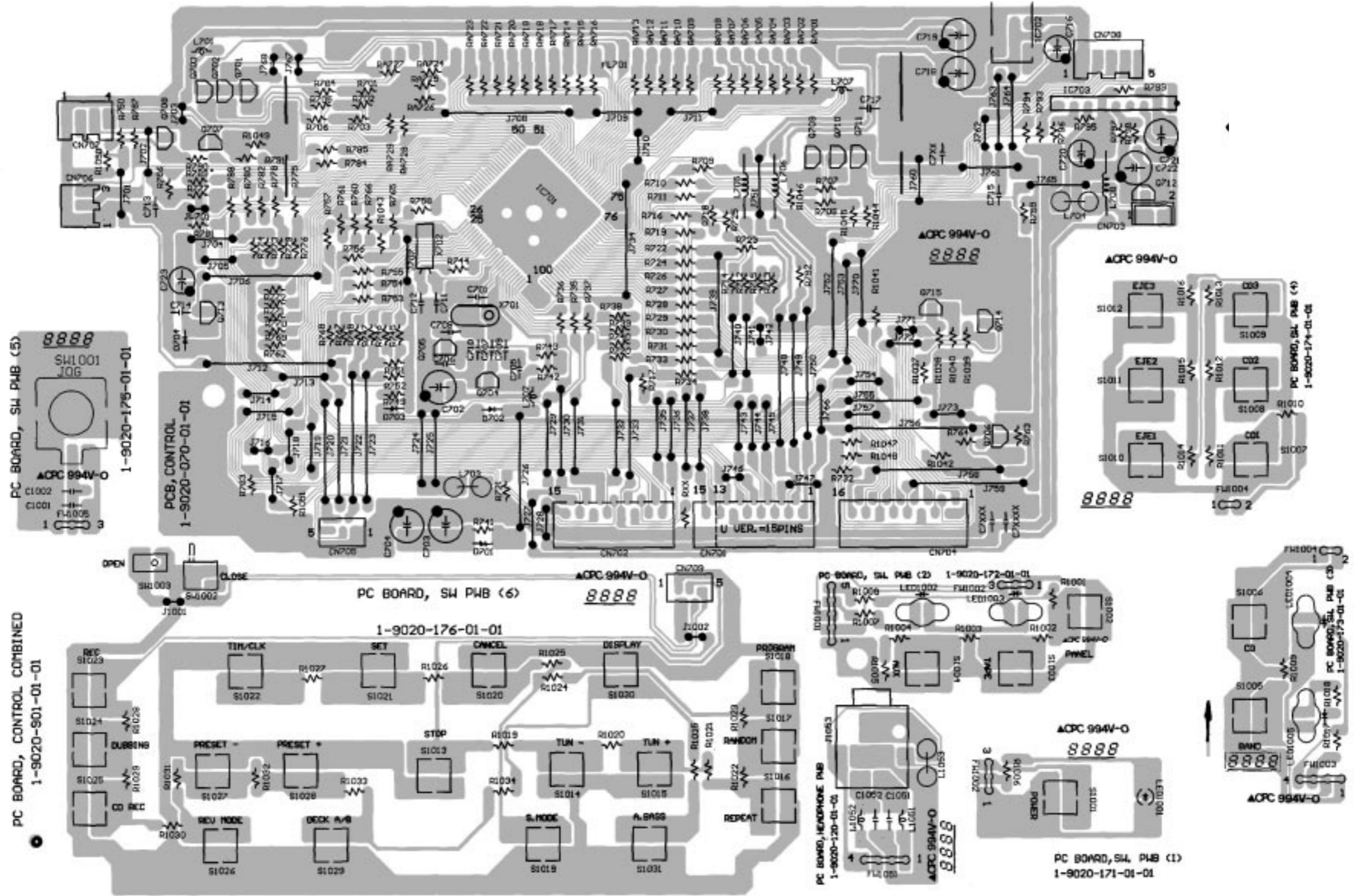
5
4
3
2
1



A B C D E F G 2-7

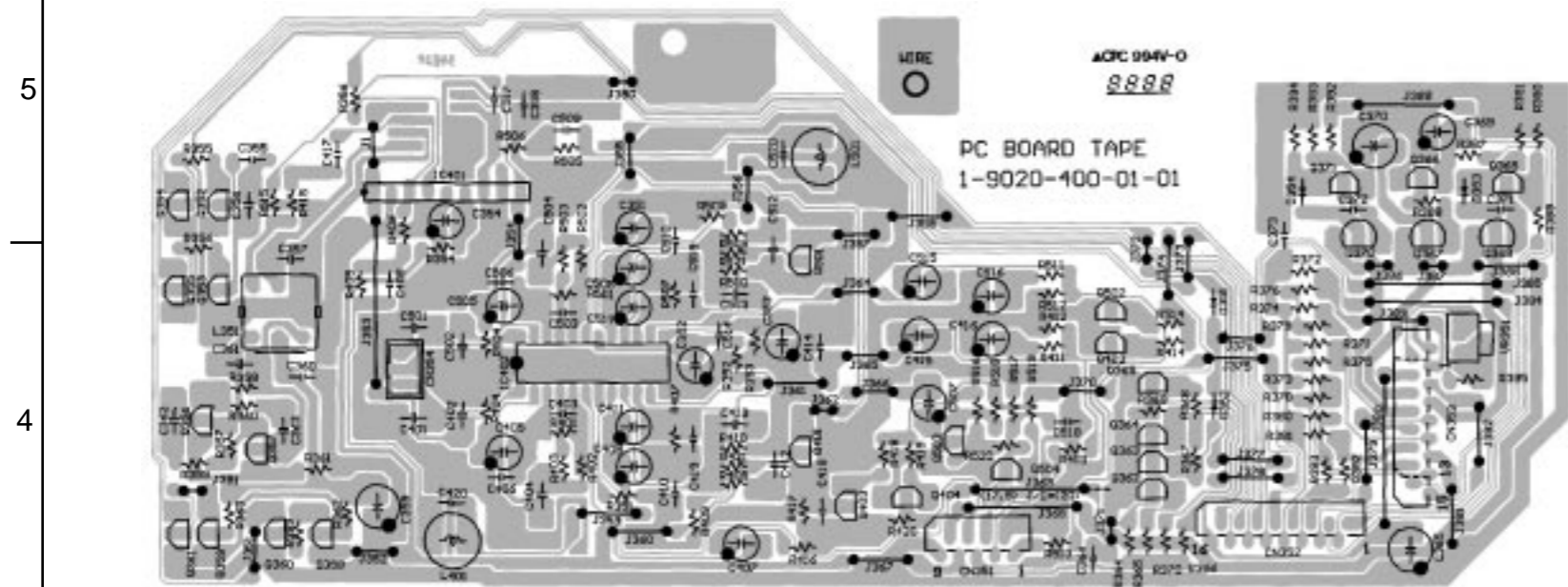
■ Control & SW board

5
4
3
2
1

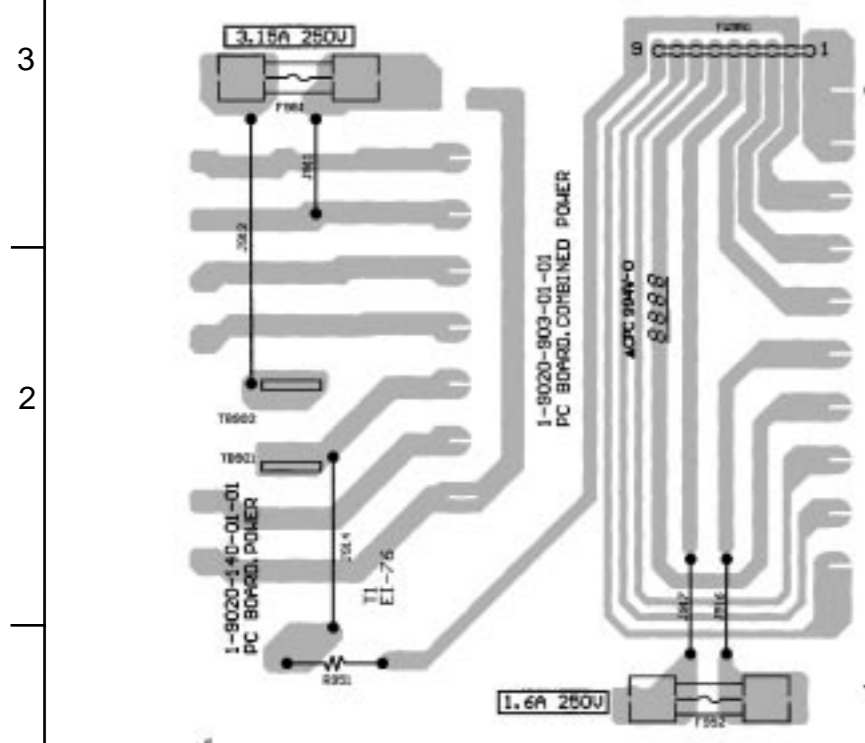


A | B | C | 28 | D | E | F | G | H

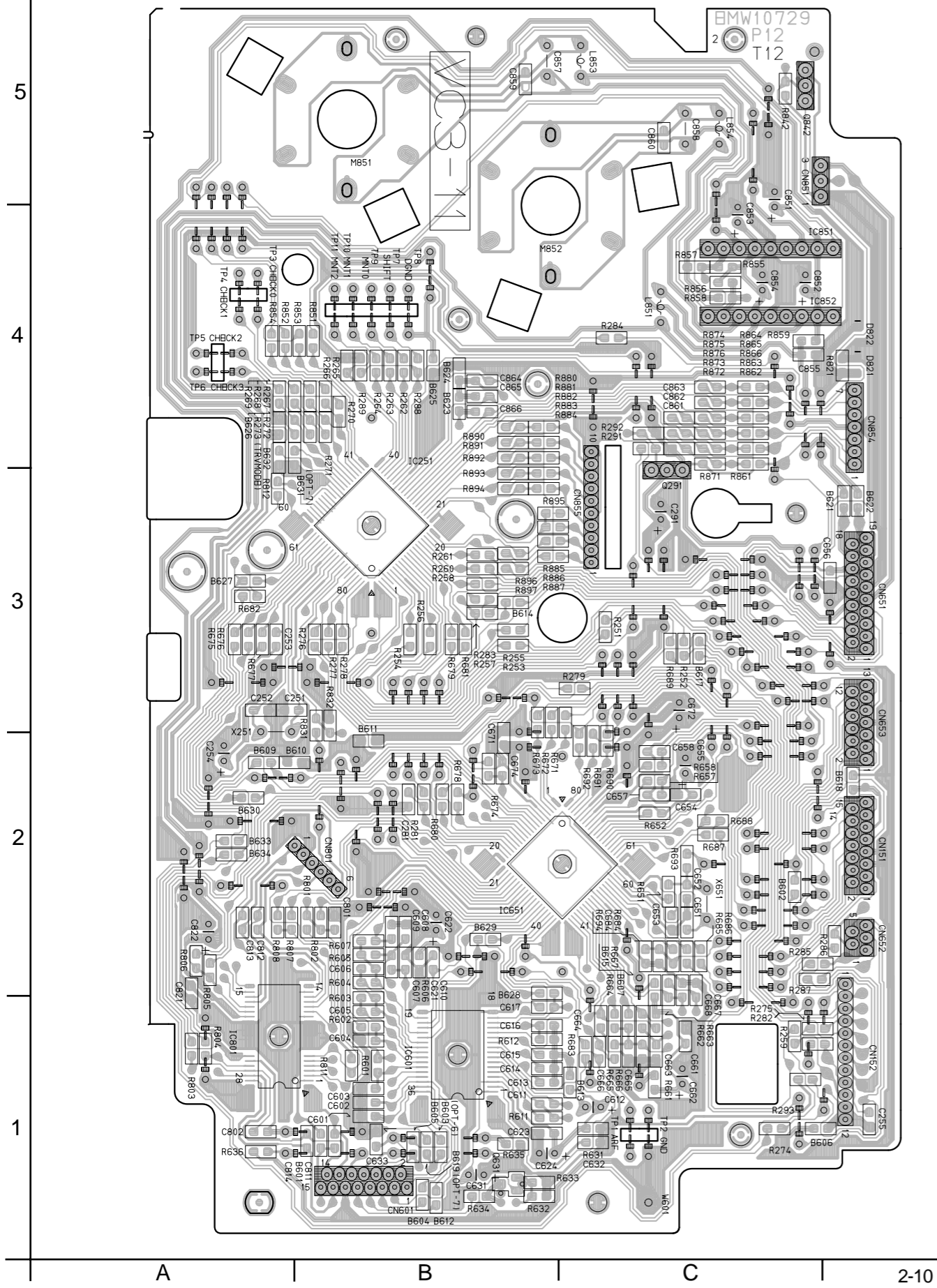
■ Cassette amplifier board



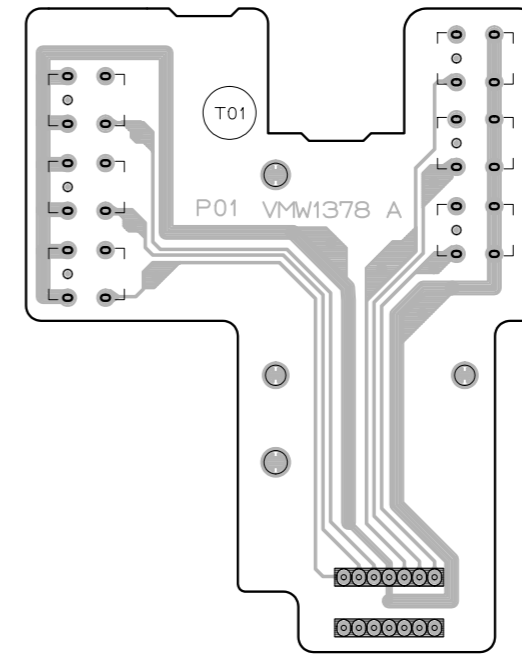
■ Power supply board



■ CD servo control board



■ CD Tray section switch board



■ Cam switch board

